

Sensor installation under pressure

The smart solution for permanently used pipes

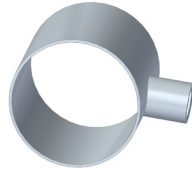


Sensor installation under pressure

The smart solution for permanently used pipes

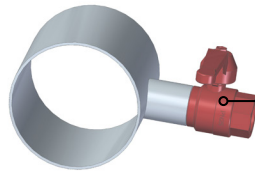
1

Weld a socket under pressure



2

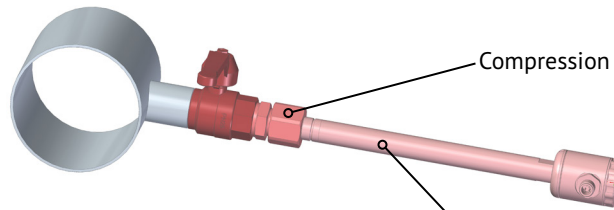
Drill through under pressure, install ball valve and close it



Ball valve BV-02M3-PI

3

Screw in the compression fitting, then push the sensor in up to the ball valve

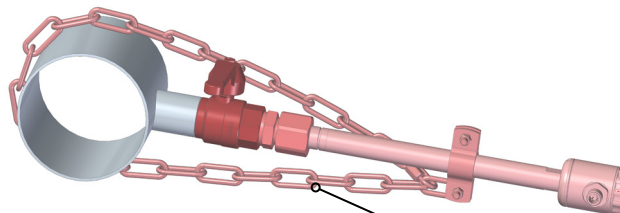


Compression fitting EEF

Push-in sensor

4

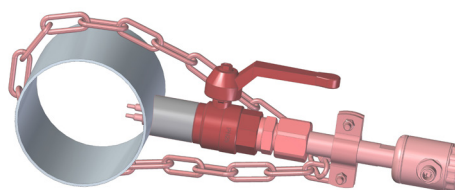
Fit the locking set and tighten it



Locking set Z00003

5

Open the ball valve, insert the sensor



6

Tighten the union nut of the compression fitting

